

# MONTHLY MEMBERSHIP PROGRESS REPORT

LOCATION NEW YORK

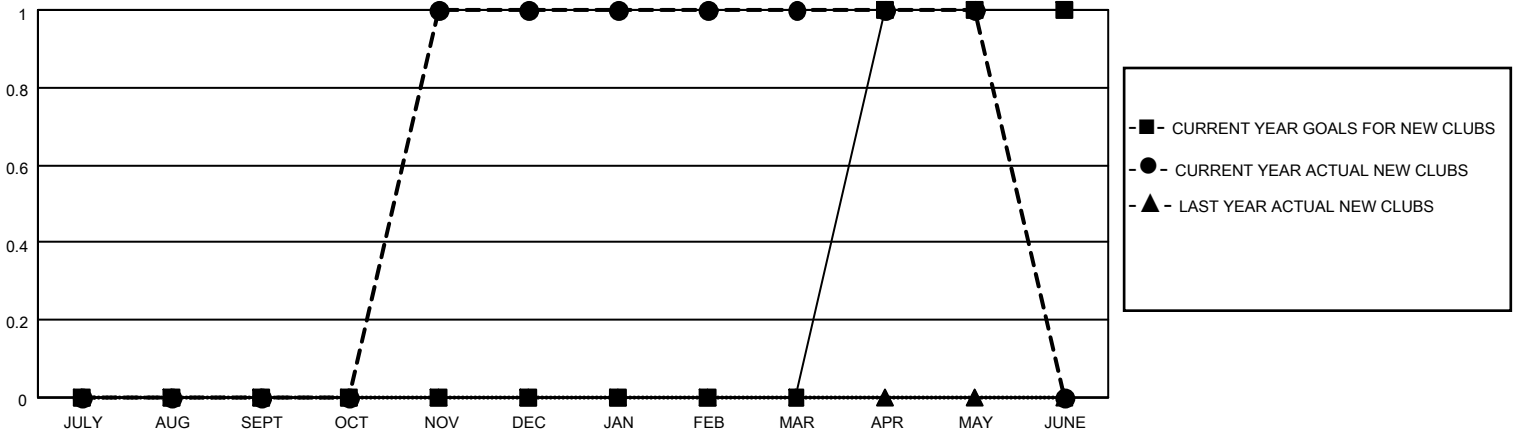
District 20 E2

Results as of: 5/31/2021

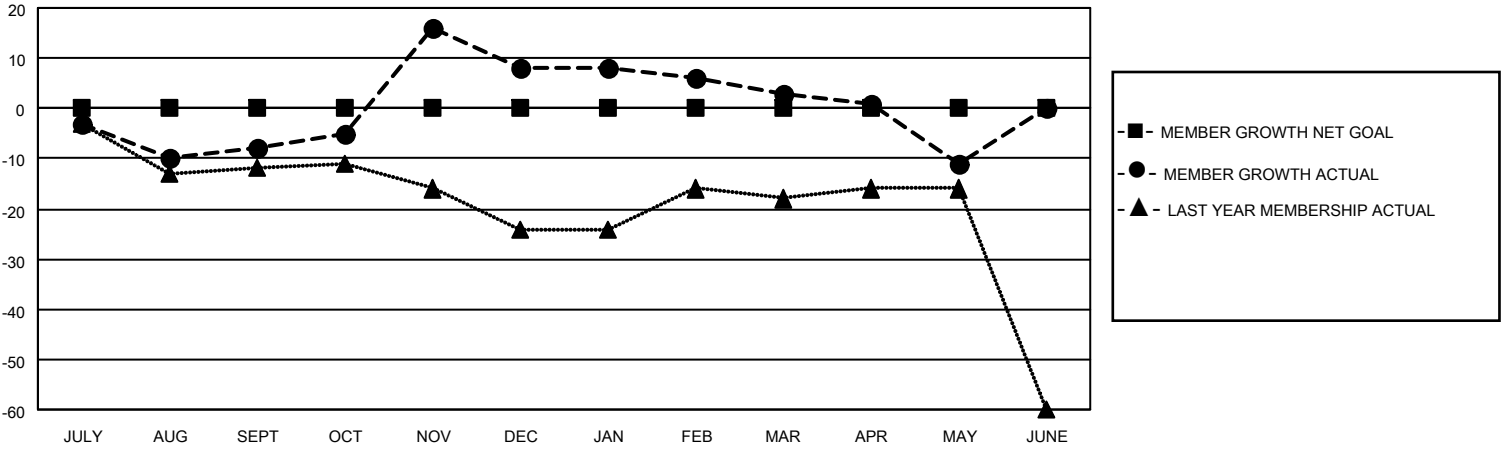
Clubs			
RESULTS FOR 2020-2021			
QUARTER	NEW CLUB GOAL	NEW CLUBS	DROPPED CLUBS
JULY/AUG/SEPT	0	0	0
OCT/NOV/DEC	0	1	1
JAN/FEB/MAR	0	0	0
APR/MAY/JUNE	1	0	0

Members			
RESULTS FOR 2020-2021			
QUARTER	MEMBER GROWTH NET GOAL	MEMBER GROWTH ACTUAL	DROPPED MEMBERS ACTUAL (including transfers)
JULY/AUG/SEPT	0	11	16
OCT/NOV/DEC	0	45	28
JAN/FEB/MAR	0	6	10
APR/MAY/JUNE	0	6	18

**GOALS AND ACTUAL NEW CLUBS CUMULATIVE**



**GOALS AND ACTUAL MEMBERS CUMULATIVE**



**DROPPED CLUBS: 1**

16 CLUBS OF 36 ADDED 1 OR MORE NEW MEMBERS

<u>GENDER DISTRIBUTION</u>	
MALE	542 (61.31%)
FEMALE	342 (38.69%)

<u>DROPPED MEMBERS</u>	
DECEASED	12
CLUB CANCELLED	0
OTHER	60
<b>TOTAL</b>	<b>72</b>

[CLICK HERE FOR CUMULATIVE MEMBERSHIP DATA](#)

TOTAL FAMILY UNIT MEMBERS	183
FAMILY MEMBERS PAYING HALF DUES	94